

THESE PLANS ARE THE INTELLECTUAL PROPERTY OF IMBUE DESIGN, LLC AND ARE PROTECTED BY COMMON LAW, STATUTORY AND OTHER FEDERAL AND STATE RIGHTS. NO PART OF THESE PLANS MAY BE REPRODUCED OR TRANSMITTED IN ANY FORM OR BY ANY MEANS, WITHOUT THE EXPLICIT WRITTEN CONSENT OF IMBUE DESIGN, LLC.

imbue design

801.477.4174
849 Denver Street
SLC, Utah 84111

122 Canyon Cove Circle
Springdale, Utah 84767
the watchman cabin



HS

THESE PLANS ARE THE INTELLECTUAL PROPERTY OF IMBUE DESIGN, LLC AND ARE PROTECTED BY COMMON LAW, STATUTORY AND OTHER RESERVED RIGHTS INCLUDING, BUT NOT LIMITED TO, COPYRIGHT. THESE DRAWINGS MAY NOT BE REPRODUCED OR USED FOR ANY PURPOSE WITHOUT THE EXPLICIT WRITTEN CONSENT OF IMBUE DESIGN, LLC.

imbue design

801.477.4174
849 Denver Street
SLC, Utah 84111

122 Canyon Cove Circle
Springdale, Utah 84767
the watchman cabin

H2 DESIGN FEATURES

THREE STRUCTURES : Main house, casita, carport...three distinct structures to separate the function and use of the spaces. While footprint is slightly increased, personal privacy and security are increased. Travel light by keeping spare clothes stored in the house and don't worry about the VRBO guests rifling through your unmentionables.

FUNCTION : In the main house, two en-suite bedrooms are divided with an open kitchen, living and dining space. The full kitchen can serve a gathering of eight friends and family. The casita is a bit more functional than requested, with a full en-suite bedroom separated from the kitchen and living room.

TALL vs INTIMATE : With ceilings at 12-feet tall in the main space of the house [10-feet in the casita], the view vertically soars to bring the nearby formations directly into the living spaces. Stepping down in scale, the private rooms are 8-feet tall, creating a cozy, contained space for the bedrooms.

ROOF DECK : Integrated into the parapet of the main house, a spacious outdoor living area is created above the guest bedroom to capture the spectacular vistas. Throw down a sleeping bag, set up a picnic table, or practice your sun salutations in this secondary outdoor hang out space for the house.

MATERIALS : Honed finished, earth toned concrete masonry units ground the private spaces of the house into the property, while the living spaces are enveloped with floor-to-ceiling glass walls. Sliding doors at the living room extend the interior space to the outdoor on-grade patio. Finally, large format wood panels reach from the interior ceiling to the exterior soffit.

INSULATE : Given the extreme temperature swings between seasons, the exterior masonry block provide thermal mass for the house, with cavity filled insulation on the interior. Thick ceiling planes help create a densely packed, tightly sealed building envelope with enough insulation to keep you cool in the summer and warm in the winter.

CARPORT : Rather than dominating the front corner of the property, obstructing sight lines with a garage, a low laying car port provides covered parking for two vehicles and some lockable storage.

WOOD FIREPLACE : Both main house and the casita have wood burning fireplaces. Not only can these appliances create radiant heat, both fireplaces have a strong sculptural quality, defining a great looking interior focal point.



THESE PLANS ARE THE INTELLECTUAL PROPERTY OF IMBUE DESIGN, LLC AND ARE PROTECTED BY COMMON LAW, STATUTORY AND OTHER RESERVED RIGHTS INCLUDING, BUT NOT LIMITED TO, COPYRIGHT. THESE DRAWINGS MAY NOT BE REPRODUCED OR USED FOR ANY PURPOSE WITHOUT THE EXPLICIT WRITTEN CONSENT OF IMBUE DESIGN, LLC.

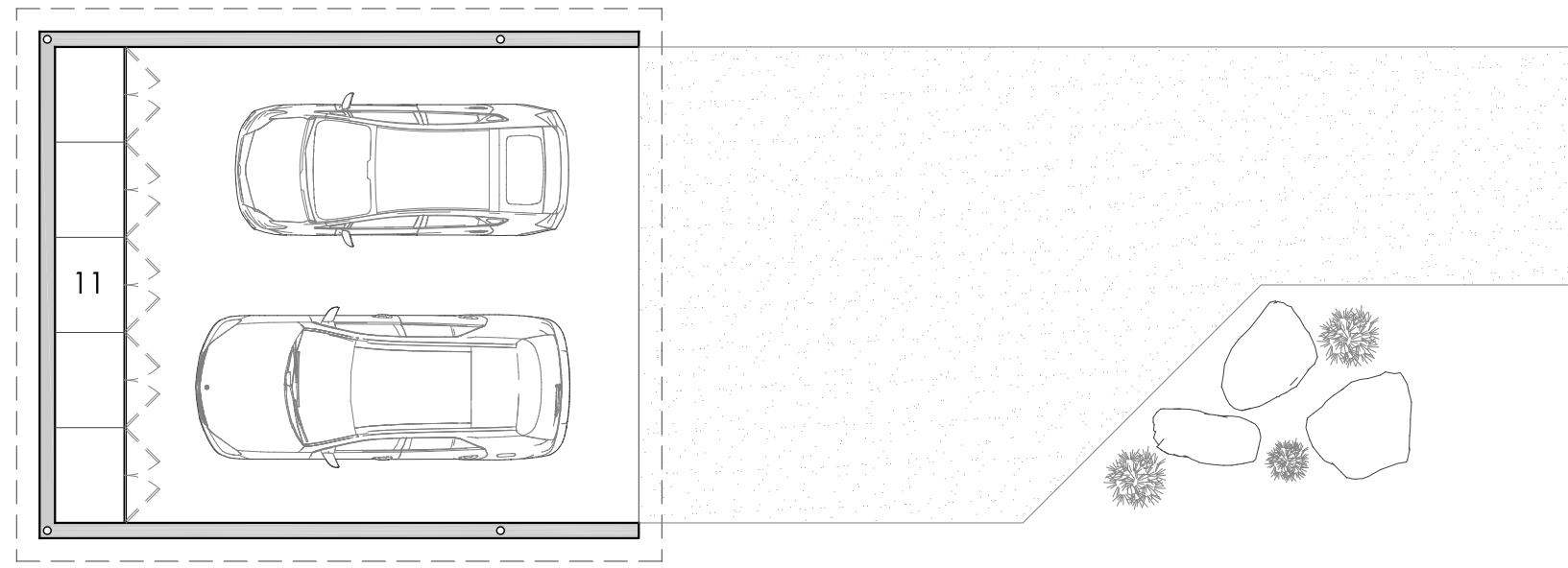
imbue design

801.477.4174
949 Denver Street
SLC, Utah 84111

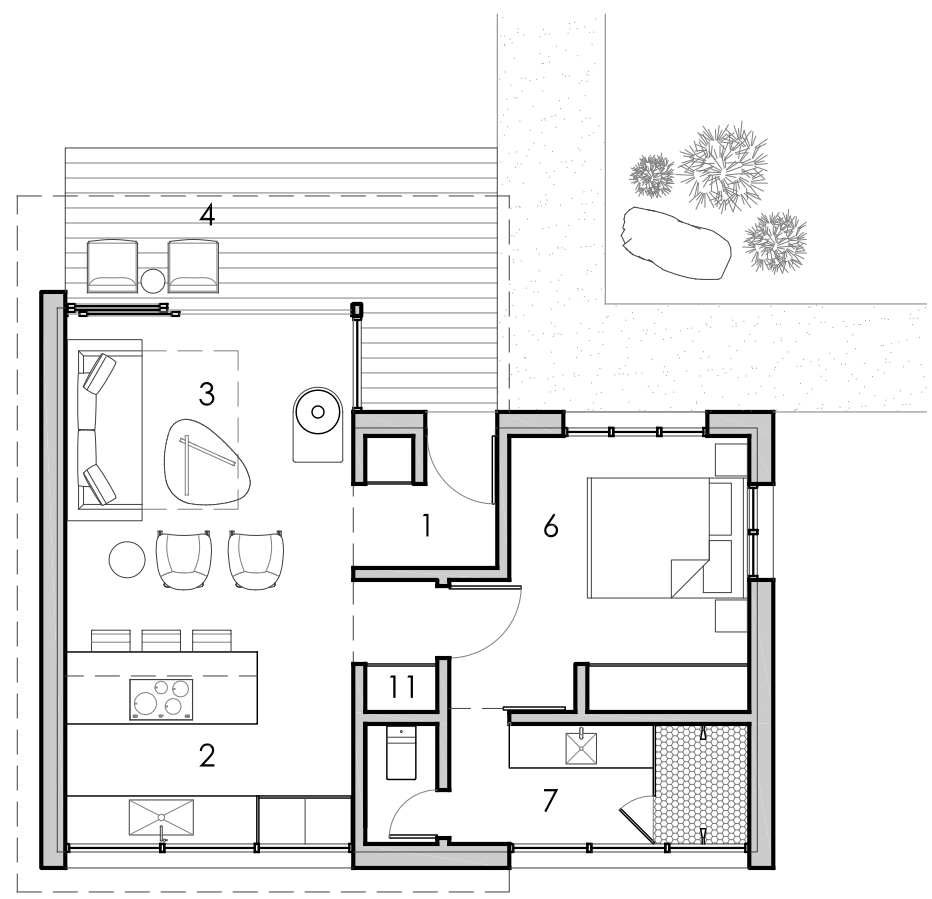
122 Canyon Cove Circle
Springdale, Utah 84767

the watchman cabin

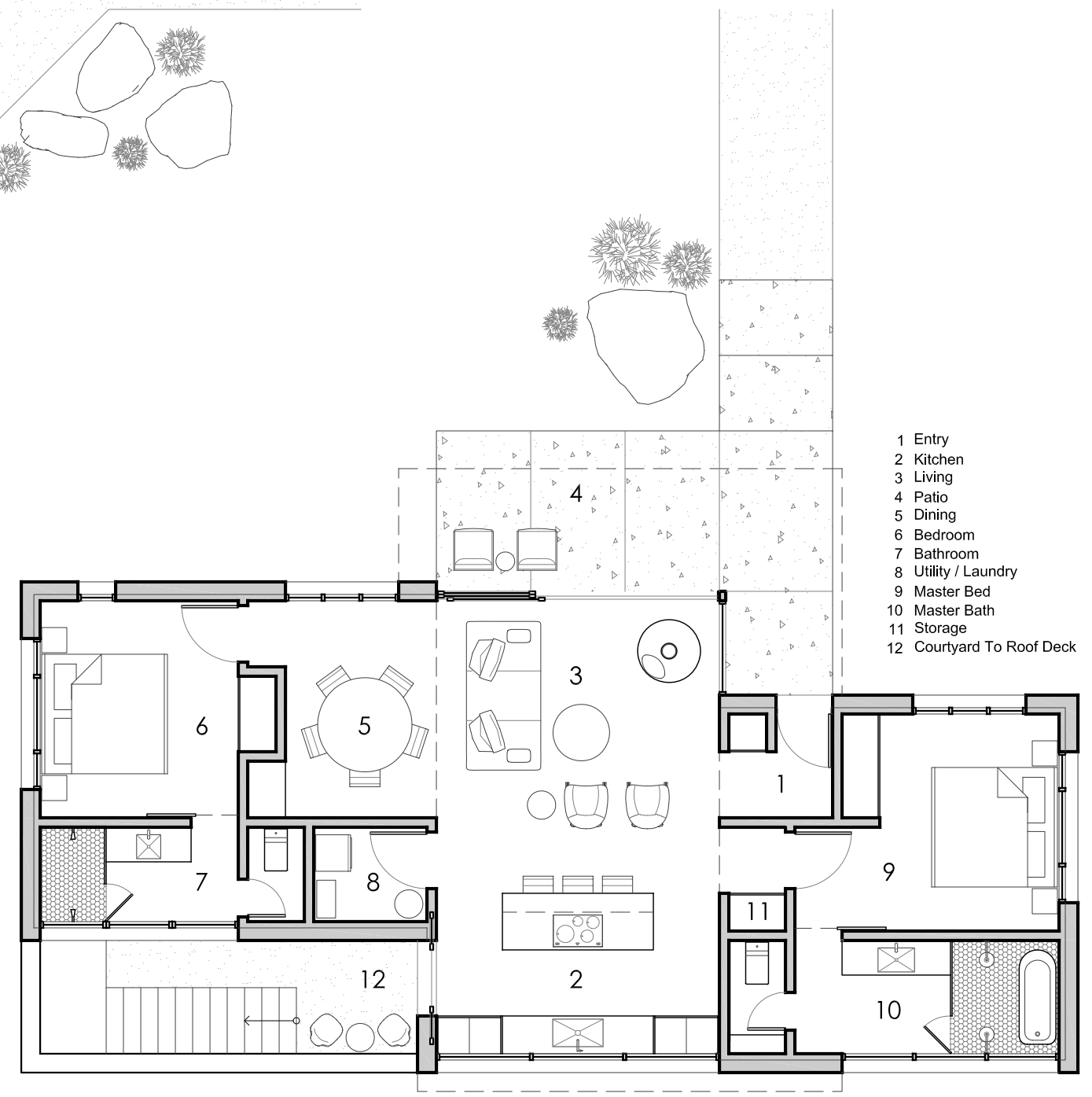
H2



A Carport Plan
SCALE 1/8" = 1'-0"
575 SQ. FT.



B Casita Plan
SCALE 1/8" = 1'-0"
650 SQ. FT.
1,850 SQ. FT.



C House Plan
SCALE 1/8" = 1'-0"
1,200 SQ. FT.
1,850 SQ. FT.

- 1 Entry
- 2 Kitchen
- 3 Living
- 4 Patio
- 5 Dining
- 6 Bedroom
- 7 Bathroom
- 8 Utility / Laundry
- 9 Master Bed
- 10 Master Bath
- 11 Storage
- 12 Courtyard To Roof Deck